

THE ANTI-PILFERAGE PIN INSTALLATION INSTRUCTIONS

If the Lower Apron Assembly of the Merchandiser has a pre-drilled hole in it for Anti-pilferage Pin installation, (Figure 1) follow steps 5 and 6 only.

Parts required: 1 - Anti-pilferage Pin - Part Number 222-6341
 2 - #8-32 Nuts - Part Number 9900-029

If the Lower Apron Assembly of the Merchandiser does not have a pre-drilled hole in it, (Figure 2) follow steps 1 through 8.

Parts required: 1 - Anti-pilferage Pin - Part Number 222-6341
 2 - #8-32 Nuts - Part Number 9900-029
 1 - Drill Fixture - Part Number 222-6342

1. Remove the first two Pull Knob Shaft Assemblies in the left end of the Lower Apron Assembly.
2. Place the Drill Fixture on the Lower Apron Assembly and clamp the Fixture in place. The Fixture fits around the Book Match Baffle at the left side of the Apron.
3. Drill a .171 (11/64") diameter hole into the Apron. Use the hole in the Fixture for drill location.
4. Remove the Fixture.
5. Insert the Anti-pilferage pin up into the hole. The Pin extends into the Delivery Pan area.
6. Attach the pin with the two #8 nuts. Tighten the lower nut and then tighten the upper nut to jam the first nut.
7. Replace the Pull Knob Shaft Assemblies removed in Step 1.

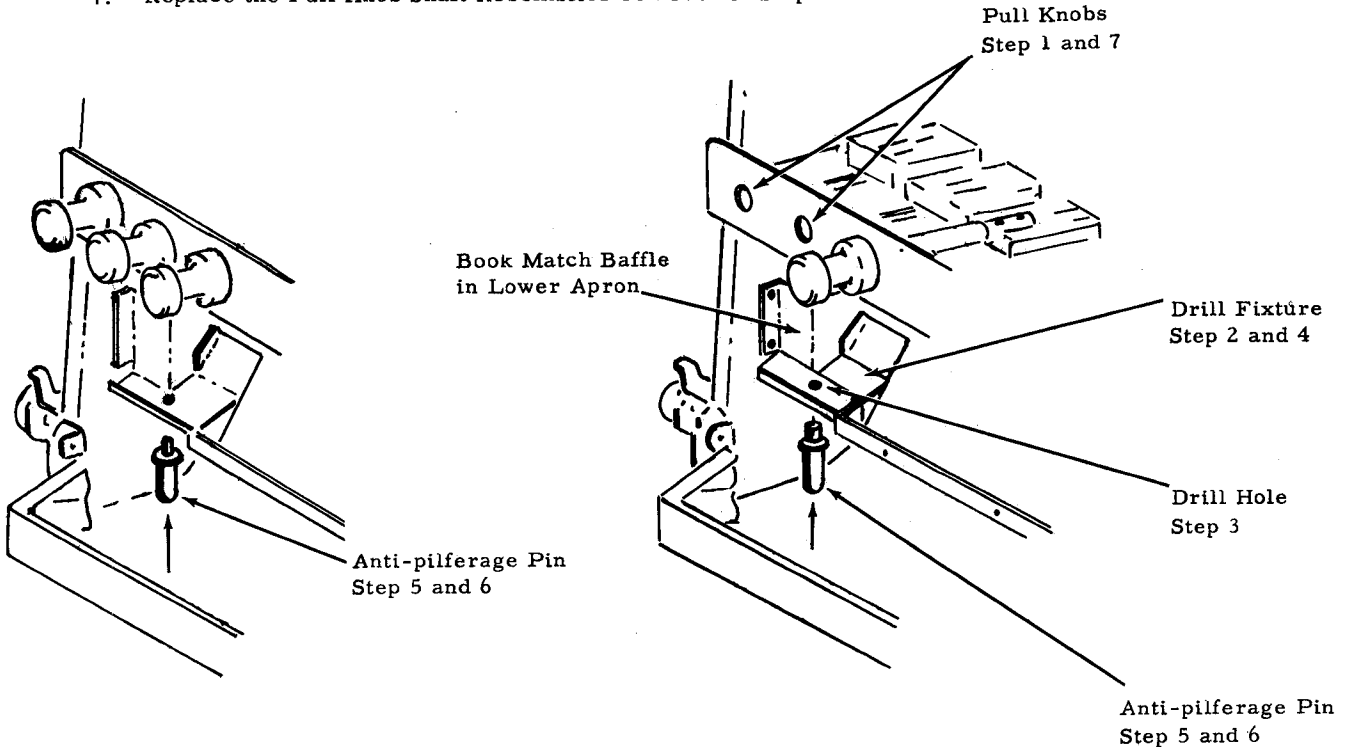


Figure 1

Figure 2

SET-UP INSTRUCTION
AND
KIT INSTALLATION INSTRUCTION

REQUEST FOR CHANGE

To: Engineering Dept. From: Publications Dept. Date 9-3-81

Merchandiser or Coin Mechanism 222

Type of Instruction: Set-up Kit Installation

Instruction Part Number 2226347

Title of Instruction: Anti-Pilferage Pin Installation Instructions

Change Instruction from Original or Revision to Revision A

Number of pages to be Added _____ Deleted _____

What is to be done with the remaining inventory of the Instructions with the existing Revision letter? _____

Is there a supplement to the existing Instruction? Yes No

If yes, what is to be done with the remaining inventory of that supplement? _____

Reason for Request add part no. to kit instructions

Purchasing need date for new Repro-Copy _____

Requested by: _____ Supervisor: [Signature]

Engineering Remarks ECO # 222-1257 issued to revise installation instructions as per request.

Assigned ECO Number _____

Engineering Approval RCox

PUBLICATIONS DEPARTMENT
REPRO-COPY WITHDRAWAL INFORMATION SHEET

ECO 222-1257

DATE 9-4-81

UNIT NUMBER 222 6367

CIRCLE ONE: Orig. Rev. A

TITLE Anti-Pilgrimage Bin Installation

SPECIAL INFORMATION: Single page - added part number

ZEROX ONLY when requested

TO WHOM SENT _____

REQUESTED BY _____

PROBABLE DATE OF RETURN _____

ACTUAL DATE OF RETURN _____

PRINTED SAMPLE FILED YES NO

FILED BY _____

COMMENTS _____